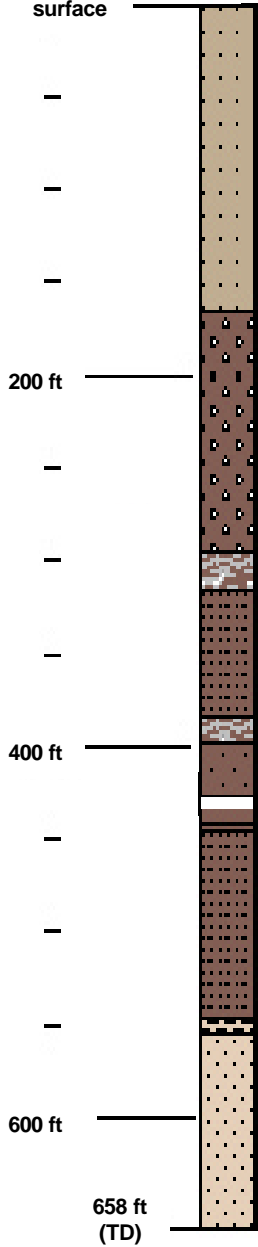


Land surface



0-658' Valley-fill Alluvium

0-165' silty sand w/ cobbles, mod. yell-brn (10YR 6/2), fg sand 0-5', coarsens, <10% gravel, cobbles in beds, mostly volcanic clasts, tuffs and basalt; coarse cobbles 90-95'; coarse gravel beyond 110'

165-295' coarse gravels, reddish brown (10R 4/2) due to red rhyolitic clasts, subround to round, coarse sand bed 193-200

295-315' coarse sand

315-382' pebble gravels, locally sandy

382-397' coarse sand and fine pebbles

397-425' coarse pebbly gravel

425-430' coarse sand

430-440' no return

440-445' gravel, multicolored

445-545' sandy gravel, various clast types, gen. red brown colors, 1' ft. boulder 480-481, 530-540' coarser gravels

545-552' clay with fine pebbles and sand, light brown (5YR 5/6)

552-658' sand, coarse sand and fine gravel, common dark red and grey rhyolitic pebbles, cobbles beyond 640', 655-658 no sample

**NC-Washburn-1X
SUMMARY LITHOLOGIC LOG**